

CATTLE FOR SALE

140 young pairs and 220 running age May-June calvers
 Phone 406-386-2447, Big Sandy, Montana

FARM EQUIPMENT FOR SALE

Riteway 8168 68-ft. heavy harrow, like new, used less than 1000 acres...\$39,500
 Degelman R570H rock picker, hydraulic drive and high lift...\$6950
 Call Doug Ross (406) 473-2357 or 366-0052
 Judith Gap, MT

Prickly Pear Ranch

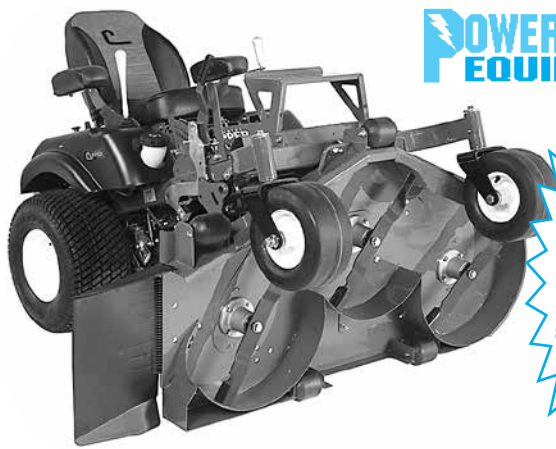
• Simmental • Sim-Angus

BULLS FOR SALE Private Treaty

Helena, Montana

Call Troy 406-949-1754

website: pricklypearsimmental.com



**POWERHOUSE
 EQUIPMENT**

2018 Units
 arriving soon!
 Call for
 more info!
 Get carryover
 and demo units
 before they
 are gone!

Now is a great time to
 think about mowers!

• Joystick steering, stand-up deck

North of Great Falls, MT countryclipper.com
 (406) 727-9994

ROD COURTNAGE FARM AUCTION

Saturday, June 16, 2018

Big Sandy, MT

Sale Conducted by B & B Auction Sales

Auctioneers note: A nice selection of Tractors, Trucks, Pickups and Haying Equipment as well as Misc Items, will be offered at Auction.

Tractors -

Case-Int 7120 - 8.3 Cummins - 160 HP - Power Shift
 Front Wheel Assist w/ 710 Loader
 NH G1 170 - 160 HP - Power Shift - Front Wheel Assist
 w/ Ford Loader & 8' Bucket
 NH TC 35 - Front Wheel Assist w/ Loader

Vehicles -

2001 Int Truck - 8.3 Cummins - 10 Speed w/ 5th Wheel plate
 1971 Chev 60 Truck - 16' Box & Sides w/Double Action Hoist
 1998 GMC 1/2 T Pu
 1988 Chev Suburban - 350 Engine - New Tires
 1972 Chev Pu w/ Snow Blade

Haying -

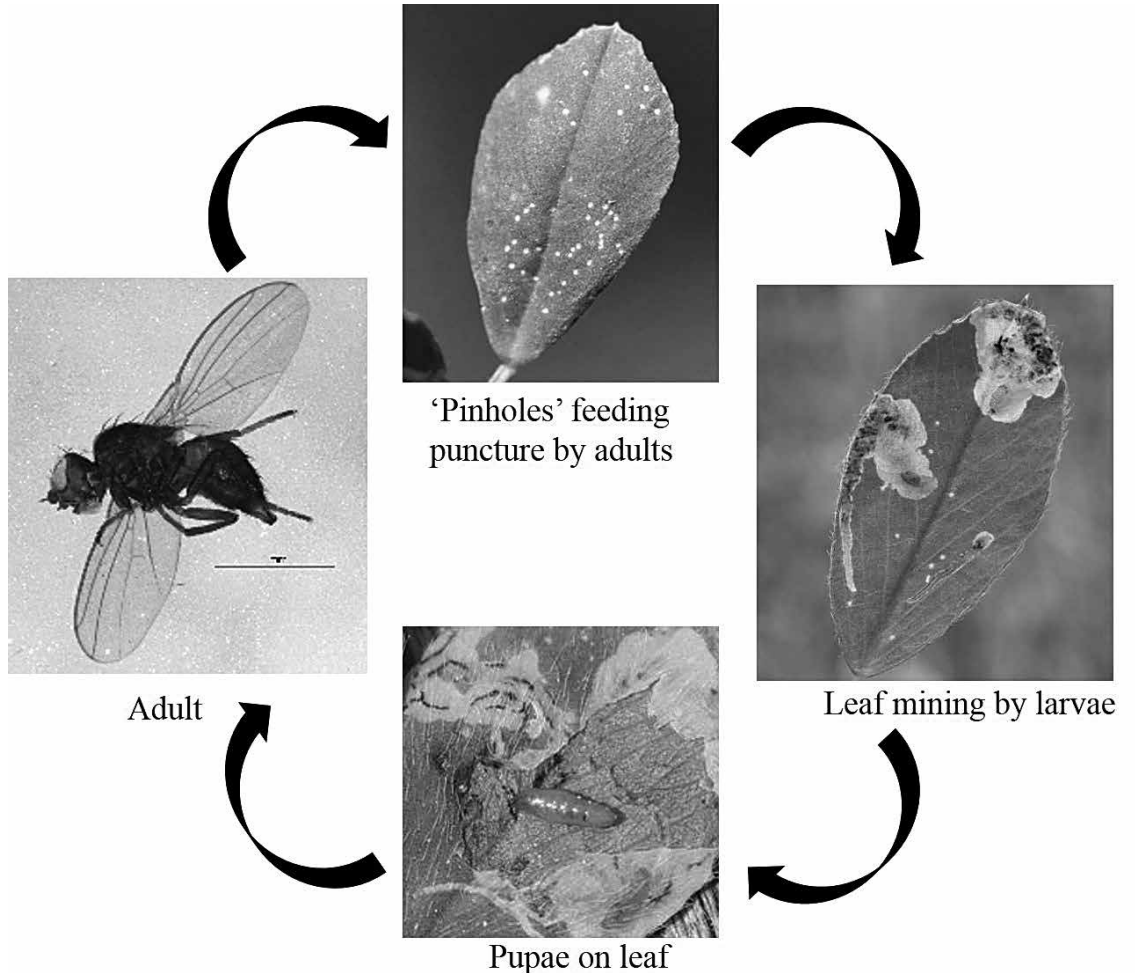
NH Swather 1100 - Diesel - Cab & Air w/ 16' Header
 NH Swather 1100 - Gas - Engine Runs w/ 14' Header
 Heston - Model 3892 - 16' - 12 Wheel Roto Rake

Watch for the June Trader's Dispatch for a full listing

B & B Auction Sales

Auctioneer - Bob Sivertson

406-262-2346 • laredoenterprises76@gmail.com



Alfalfa blotch leafminer: A new serious threat to alfalfa crop in Montana?

By Gadi V.P. Reddy, Govinda Shrestha, Anamika Sharma and Stefan T. Jaronski, Montana State University, Western Triangle Agricultural Research Center, Conrad, MT and USDA-ARS, Northern Plains Agricultural Research Laboratory, Sidney, MT

This year, Montana alfalfa producers might need to watch out for a new pest called "alfalfa blotch leafminer (ABL)" [*Agromyza frontella* (Rondani)]. This pest debuted last year (2017) in Lewis and Clark County and it is therefore likely to spread to other parts of Montana. ABL is pest of European origin that was discovered first time in Massachusetts in the late 1960s followed by Minnesota (1994), Wisconsin (1997) and North Dakota (1998). This pest has also recently reported in Alberta, Canada in 2005. ABL infestations is reported to reduce alfalfa yields by 7-20% and protein content by 10-20 % without control measures.

Alfalfa (*Medicago sativa*) is a major hay crop in Montana and is a preferred host of ABL. Alfalfa producers should be aware of pest morphology, biology, damage symptoms and control measures of ABL. The adults ABL is a very small (about 1/8 inch long), hump-backed black fly. In spring, females lay an average of three eggs on the bottom side of leaves and each female can lay up to total of 140 eggs. The larvae (also called maggots) are pale yellow and mine between the leaf surfaces. Adult feeding cause tiny "pinholes" on the leaf surface. Adult puncturing is not considered a significant problem but is an indication of early damage symptoms. The larvae feed inside the leaflet, producing tunnels or mines in the middle of the top and bottom layers of the leaf (Figure 1). These tunnels create a "blotchy" appearance as this process starts at the base of the leaflet and widen towards the leaf apex. The larvae feed within the alfalfa leaves for about six to 17 days. Once the development is complete, larvae will leave the leaf and fall to the ground to pupate. Temperature dependent pupal diapause occur in ABL, which mainly happen

in October–November and as per published information, it has 3–4 generations per year. However, the ABL life-cycle in Montana remains unknown.

Although economic threshold levels for ABL have not been determined in Montana, control may be initiated when 30-40% of the leaflets (or 250 pinholes per three leaves) show adult pinhole feeding scars in plants. Therefore, it is advisable to scout alfalfa fields weekly to assess the percentage of leaves with pinhole feeding during alfalfa cropping period. Since the alfalfa crop attracts and houses many beneficial insects including crop pollinators, producers should be careful when deciding chemical control application. The management practices including chemical control for ABL can be found in the High Plains Integrated Pest Management Guide (https://wiki.bugwood.org/HPIPM:Alfalfa_Blotch_Leafminer). Early cutting can be used to decrease damage and would be advantageous through first cut. Also, hay should be removed from the field as soon as possible to prevent pupae from surviving. Regarding biological control options, the larval parasitoids *Dacnusa dryas* (Nixon) and *Chrysocharis liriomyzae* Delucchi have been found effective with parasitism rates greater than 50% in northeastern United States. These parasitoids are already established in the Midwest and eastern Canada. If our survey studies indicate the pest populations and damage levels are high, the parasitoids could be produced and released to manage the ABL population. However, multiple releases of parasitoids might be necessary to control ABL wherever it has spread into new areas ahead of its natural enemies. Our monitoring studies will also determine if these parasitoids have been introduced fortuitously along with the pest.

More dumb state laws

Oregon: No "tests of physical endurance" ... while driving

It is considered a speed racing offense in Oregon if you participate in any "test of physical endurance" while on the highway. Sorry, y'all: No more seeing how long you can work the steering wheel with your teeth.

Arizona: No spitting in public

In the town of Goodyear, Arizona, it is unlawful to spit "in or on" any public building, park, sidewalk, or road. Offenders may be charged a fine of up to \$2,500 and six months in prison. (And in case you need a reminder, it's also just lousy etiquette.)